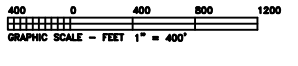
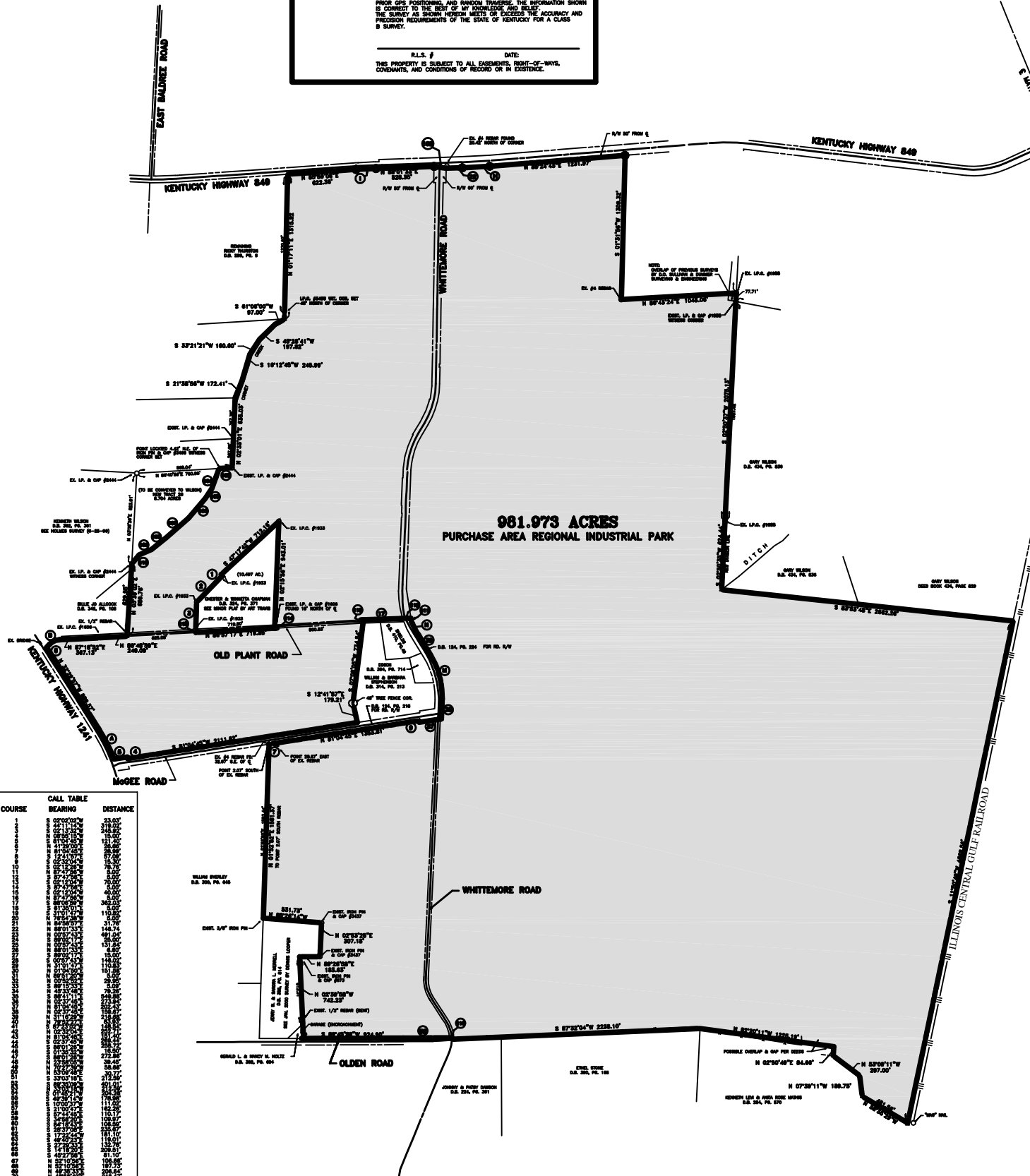
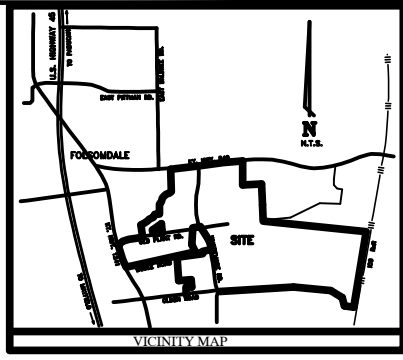


SPECIAL NOTE
 THIS SURVEYOR MADE A DILIGENT SEARCH OF THE KNOWN RECORDS AVAILABLE TO HIM IN HIS ATTEMPT TO ESTABLISH THE BOUNDARIES OF THE PARCELS AS SHOWN HEREON. HOWEVER THIS SURVEY WAS PERFORMED WITHOUT THE BENEFIT OF A TITLE EXAMINATION AND IS SUBJECT TO ANY AND ALL CONDITIONS, RIGHT-OF-WAYS, EASEMENTS, AND RESTRICTIONS THAT MAY BE REVEALED BY A COMPLETE EXAMINATION OF THE TITLES TO ALL PROPERTIES AS SHOWN HEREON.

SURVEYOR'S CERTIFICATE
 I HEREBY CERTIFY THAT THIS SURVEY WAS BY PERSONS UNDER MY DIRECT SUPERVISION BY METHOD OF GPS POSITIONING, EXISTING MONUMENTARY POINTS, AND RANGING TRAILERS. THE INFORMATION SHOWN IS CORRECT TO THE BEST OF MY KNOWLEDGE AND BELIEF. THE SURVEY AS SHOWN HEREON MEETS OR EXCEEDS THE ACCURACY AND PRECISION REQUIREMENTS OF THE STATE OF KENTUCKY FOR A CLASS B SURVEY.
 R.L.S. # _____ DATE: _____
 THIS PROPERTY IS SUBJECT TO ALL EASEMENTS, RIGHT-OF-WAYS, CONDITIONS, AND CONDITIONS OF RECORD OR IN EXISTENCE.



LEGEND

- PROPERTY BOUNDARY LINE
- - - - RIGHT-OF-WAY
- CENTERLINE
- - - - EASEMENT
- - - - CENTERLINE OF ROAD
- 1/2" X 18" IRON PIN & CAP (#3400 GET)
- EXISTING IRON MARKER AS DESCRIBED
- △ POINT AS DESCRIBED
- EXISTING CONCRETE MONUMENT

COMPOSITE PLAT OF THE PURCHASE AREA REGIONAL INDUSTRIAL PARK PROPERTY (SOUTH SECTION) 961.973 ACRES

CALL TABLE

COURSE	BEARING	DISTANCE
1	S 89°47'17"W	84.85
2	S 89°07'16"W	168.07
3	S 89°07'16"W	168.07
4	S 89°07'16"W	168.07
5	S 89°07'16"W	168.07
6	S 89°07'16"W	168.07
7	S 89°07'16"W	168.07
8	S 89°07'16"W	168.07
9	S 89°07'16"W	168.07
10	S 89°07'16"W	168.07
11	S 89°07'16"W	168.07
12	S 89°07'16"W	168.07
13	S 89°07'16"W	168.07
14	S 89°07'16"W	168.07
15	S 89°07'16"W	168.07
16	S 89°07'16"W	168.07
17	S 89°07'16"W	168.07
18	S 89°07'16"W	168.07
19	S 89°07'16"W	168.07
20	S 89°07'16"W	168.07
21	S 89°07'16"W	168.07
22	S 89°07'16"W	168.07
23	S 89°07'16"W	168.07
24	S 89°07'16"W	168.07
25	S 89°07'16"W	168.07
26	S 89°07'16"W	168.07
27	S 89°07'16"W	168.07
28	S 89°07'16"W	168.07
29	S 89°07'16"W	168.07
30	S 89°07'16"W	168.07
31	S 89°07'16"W	168.07
32	S 89°07'16"W	168.07
33	S 89°07'16"W	168.07
34	S 89°07'16"W	168.07
35	S 89°07'16"W	168.07
36	S 89°07'16"W	168.07
37	S 89°07'16"W	168.07
38	S 89°07'16"W	168.07
39	S 89°07'16"W	168.07
40	S 89°07'16"W	168.07
41	S 89°07'16"W	168.07
42	S 89°07'16"W	168.07
43	S 89°07'16"W	168.07
44	S 89°07'16"W	168.07
45	S 89°07'16"W	168.07
46	S 89°07'16"W	168.07
47	S 89°07'16"W	168.07
48	S 89°07'16"W	168.07
49	S 89°07'16"W	168.07
50	S 89°07'16"W	168.07
51	S 89°07'16"W	168.07
52	S 89°07'16"W	168.07
53	S 89°07'16"W	168.07
54	S 89°07'16"W	168.07
55	S 89°07'16"W	168.07
56	S 89°07'16"W	168.07
57	S 89°07'16"W	168.07
58	S 89°07'16"W	168.07
59	S 89°07'16"W	168.07
60	S 89°07'16"W	168.07
61	S 89°07'16"W	168.07
62	S 89°07'16"W	168.07
63	S 89°07'16"W	168.07
64	S 89°07'16"W	168.07
65	S 89°07'16"W	168.07
66	S 89°07'16"W	168.07
67	S 89°07'16"W	168.07
68	S 89°07'16"W	168.07
69	S 89°07'16"W	168.07
70	S 89°07'16"W	168.07
71	S 89°07'16"W	168.07
72	S 89°07'16"W	168.07
73	S 89°07'16"W	168.07
74	S 89°07'16"W	168.07
75	S 89°07'16"W	168.07
76	S 89°07'16"W	168.07
77	S 89°07'16"W	168.07
78	S 89°07'16"W	168.07
79	S 89°07'16"W	168.07
80	S 89°07'16"W	168.07
81	S 89°07'16"W	168.07
82	S 89°07'16"W	168.07
83	S 89°07'16"W	168.07
84	S 89°07'16"W	168.07
85	S 89°07'16"W	168.07
86	S 89°07'16"W	168.07
87	S 89°07'16"W	168.07
88	S 89°07'16"W	168.07
89	S 89°07'16"W	168.07
90	S 89°07'16"W	168.07
91	S 89°07'16"W	168.07
92	S 89°07'16"W	168.07
93	S 89°07'16"W	168.07
94	S 89°07'16"W	168.07
95	S 89°07'16"W	168.07
96	S 89°07'16"W	168.07
97	S 89°07'16"W	168.07
98	S 89°07'16"W	168.07
99	S 89°07'16"W	168.07
100	S 89°07'16"W	168.07
101	S 89°07'16"W	168.07
102	S 89°07'16"W	168.07

CURVE TABLE

CURVE	RADIUS	TANGENT	LENGTH	DELTA	DEGREE	CHORD	CH-BEARING
1	1000.00	149.87	157.08	10.27	2.77	149.87	N 89°07'16"W
2	1000.00	149.87	157.08	10.27	2.77	149.87	S 89°07'16"W
3	1000.00	149.87	157.08	10.27	2.77	149.87	N 89°07'16"W
4	1000.00	149.87	157.08	10.27	2.77	149.87	S 89°07'16"W
5	1000.00	149.87	157.08	10.27	2.77	149.87	N 89°07'16"W
6	1000.00	149.87	157.08	10.27	2.77	149.87	S 89°07'16"W
7	1000.00	149.87	157.08	10.27	2.77	149.87	N 89°07'16"W
8	1000.00	149.87	157.08	10.27	2.77	149.87	S 89°07'16"W
9	1000.00	149.87	157.08	10.27	2.77	149.87	N 89°07'16"W
10	1000.00	149.87	157.08	10.27	2.77	149.87	S 89°07'16"W
11	1000.00	149.87	157.08	10.27	2.77	149.87	N 89°07'16"W
12	1000.00	149.87	157.08	10.27	2.77	149.87	S 89°07'16"W
13	1000.00	149.87	157.08	10.27	2.77	149.87	N 89°07'16"W
14	1000.00	149.87	157.08	10.27	2.77	149.87	S 89°07'16"W
15	1000.00	149.87	157.08	10.27	2.77	149.87	N 89°07'16"W
16	1000.00	149.87	157.08	10.27	2.77	149.87	S 89°07'16"W
17	1000.00	149.87	157.08	10.27	2.77	149.87	N 89°07'16"W
18	1000.00	149.87	157.08	10.27	2.77	149.87	S 89°07'16"W
19	1000.00	149.87	157.08	10.27	2.77	149.87	N 89°07'16"W
20	1000.00	149.87	157.08	10.27	2.77	149.87	S 89°07'16"W
21	1000.00	149.87	157.08	10.27	2.77	149.87	N 89°07'16"W
22	1000.00	149.87	157.08	10.27	2.77	149.87	S 89°07'16"W
23	1000.00	149.87	157.08	10.27	2.77	149.87	N 89°07'16"W
24	1000.00	149.87	157.08	10.27	2.77	149.87	S 89°07'16"W
25	1000.00	149.87	157.08	10.27	2.77	149.87	N 89°07'16"W
26	1000.00	149.87	157.08	10.27	2.77	149.87	S 89°07'16"W
27	1000.00	149.87	157.08	10.27	2.77	149.87	N 89°07'16"W
28	1000.00	149.87	157.08	10.27	2.77	149.87	S 89°07'16"W
29	1000.00	149.87	157.08	10.27	2.77	149.87	N 89°07'16"W
30	1000.00	149.87	157.08	10.27	2.77	149.87	S 89°07'16"W
31	1000.00	149.87	157.08	10.27	2.77	149.87	N 89°07'16"W
32	1000.00	149.87	157.08	10.27	2.77	149.87	S 89°07'16"W
33	1000.00	149.87	157.08	10.27	2.77	149.87	N 89°07'16"W
34	1000.00	149.87	157.08	10.27	2.77	149.87	S 89°07'16"W
35	1000.00	149.87	157.08	10.27	2.77	149.87	N 89°07'16"W
36	1000.00	149.87	157.08	10.27	2.77	149.87	S 89°07'16"W
37	1000.00	149.87	157.08	10.27	2.77	149.87	N 89°07'16"W
38	1000.00	149.87	157.08	10.27	2.77	149.87	S 89°07'16"W
39	1000.00	149.87	157.08	10.27	2.77	149.87	N 89°07'16"W
40	1000.00	149.87	157.08	10.27	2.77	149.87	S 89°07'16"W
41	1000.00	149.87	157.08	10.27	2.77	149.87	N 89°07'16"W
42	1000.00	149.87	157.08	10.27	2.77	149.87	S 89°07'16"W
43	1000.00	149.87	157.08	10.27	2.77	149.87	N 89°07'16"W
44	1000.00	149.87	157.08	10.27	2.77	149.87	S 89°07'16"W
45	1000.00	149.87	157.08	10.27	2.77	149.87	N 89°07'16"W
46	1000.00	149.87	157.08	10.27	2.77	149.87	S 89°07'16"W
47	1000.00	149.87	157.08	10.27	2.77	149.87	N 89°07'16"W
48	1000.00	149.87	157.08	10.27	2.77	149.87	S 89°07'16"W
49	1000.00	149.87	157.08	10.27	2.77	149.87	N 89°07'16"W
50	1000.00	149.87	157.08	10.27	2.77	149.87	S 89°07'16"W
51	1000.00	149.87	157.08	10.27	2.77	149.87	N 89°07'16"W
52	1000.00	149.87	157.08	10.27	2.77	149.87	S 89°07'16"W
53	1000.00	149.87	157.08	10.27	2.77	149.87	N 89°07'16"W
54	1000.00	149.87	157.08	10.27	2.77	149.87	S 89°07'16"W
55	1000.00	149.87	157.08	10.27	2.77	149.87	N 89°07'16"W
56	1000.00	149.87	157.08	10.27	2.77	149.87	S 89°07'16"W
57	1000.00	149.87	157.08	10.27	2.77	149.87	N 89°07'16"W
58	1000.00	149.87	157.08	10.27	2.77	149.87	S 89°07'16"W
59	1000.00	149.87	157.08	10.27	2.77	149.87	N 89°07'16"W
60	1000.00	149.87	157.08	10.27	2.77	149.87	S 89°07'16"W
61	1000.00	149.87	157.08	10.27	2.77	149.87	N 89°07'16"W
62	1000.00	149.87	157.08	10.27	2.77	149.87	S 89°07'16"W
63	1000.00	149.87	157.08	10.27	2.77	149.87	N 89°07'16"W
64	1000.00	149.87	157.08	10.27	2.77	149.87	S 89°07'16"W
65	1000.00	149.87	157.08	10.27	2.77	149.87	N 89°07'16"W
66	1000.00	149.87	157.08	10.27	2.77	149.87	S 89°07'16"W
67	1000.00	149.87	157.08	10.27	2.77	149.87	N 89°07'16"W
68	1000.00	149.87	157.08	10.27	2.77	149.87	S 89°07'16"W
69	1000.00	149.87	157.08	10.27	2.77	149.87	N 89°07'16"W
70	1000.00	149.87	157.08	10.27	2.77	149.87	S 89°07'16"W
71	1000.00	149.87	157.08	10.27	2.77	149.87	N 89°07'16"W
72	1000.00	149.87	157.08	10.27	2.77	149.87	S 89°07'16"W
73	1000.00	149.87	157.08	10.27	2.77	149.87	N 89°07'16"W
74	1000.00	149.87	157.08	10.27	2.77	149.87	S 89°07'16"W
75	1000.00	149.87	157.08	10.27	2.77	149.87	N 89°07'16"W
76	1000.00	149.87	157.08	10.27	2.77	149.87	S 89°07'16"W
77	1000.00	149.87	157.08	10.27	2.77	149.87	N 89°07'16"W
78	1000.00	149.87	157.08	10.27	2.77	149.87	S 89°07'16"W
79	1000.00	149.87	157.08	10.27	2.77	149.87	N 89°07'16"W
80	1000.00	149.87	157.08	10.27	2.77	149.87	S 89°07'16"W
81	1000.00	149.87	157.08	10.27	2.77	149.87	N 89°07'16"W
82	1000.00	149.87	157.08	10.27	2.77	149.87	S 89°07'16"W
83							