

LEGEND	
	PROPERTY BOUNDARY LINE
	RIGHT-OF-WAY
	CENTERLINE
	EASEMENT
	CENTERLINE OF ROAD
	1/2" X 10" IRON PIN & CAP (#3409 SET)
	EXISTING IRON MARKER AS DESCRIBED
	EXISTING CONCRETE R.O.W. MONUMENT
	POINT AS DESCRIBED

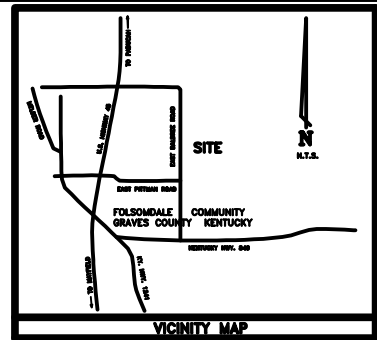
SURVEYOR'S CERTIFICATE

I HEREBY CERTIFY THAT THIS SURVEY WAS BY PERSONS UNDER MY DIRECT SUPERVISION BY METHOD OF GPS POSITIONING, EXISTING MONUMENTATION FROM GPS POSITIONING, AND RANDOM TRAVERSE. THE INFORMATION SHOWN IS CORRECT TO THE BEST OF MY KNOWLEDGE AND BELIEF. THE SURVEY AS SHOWN HEREON MEETS OR EXCEEDS THE ACCURACY AND PRECISION REQUIREMENTS OF THE STATE OF KENTUCKY FOR A CLASS B SURVEY.

R.L.S. # _____ DATE: _____

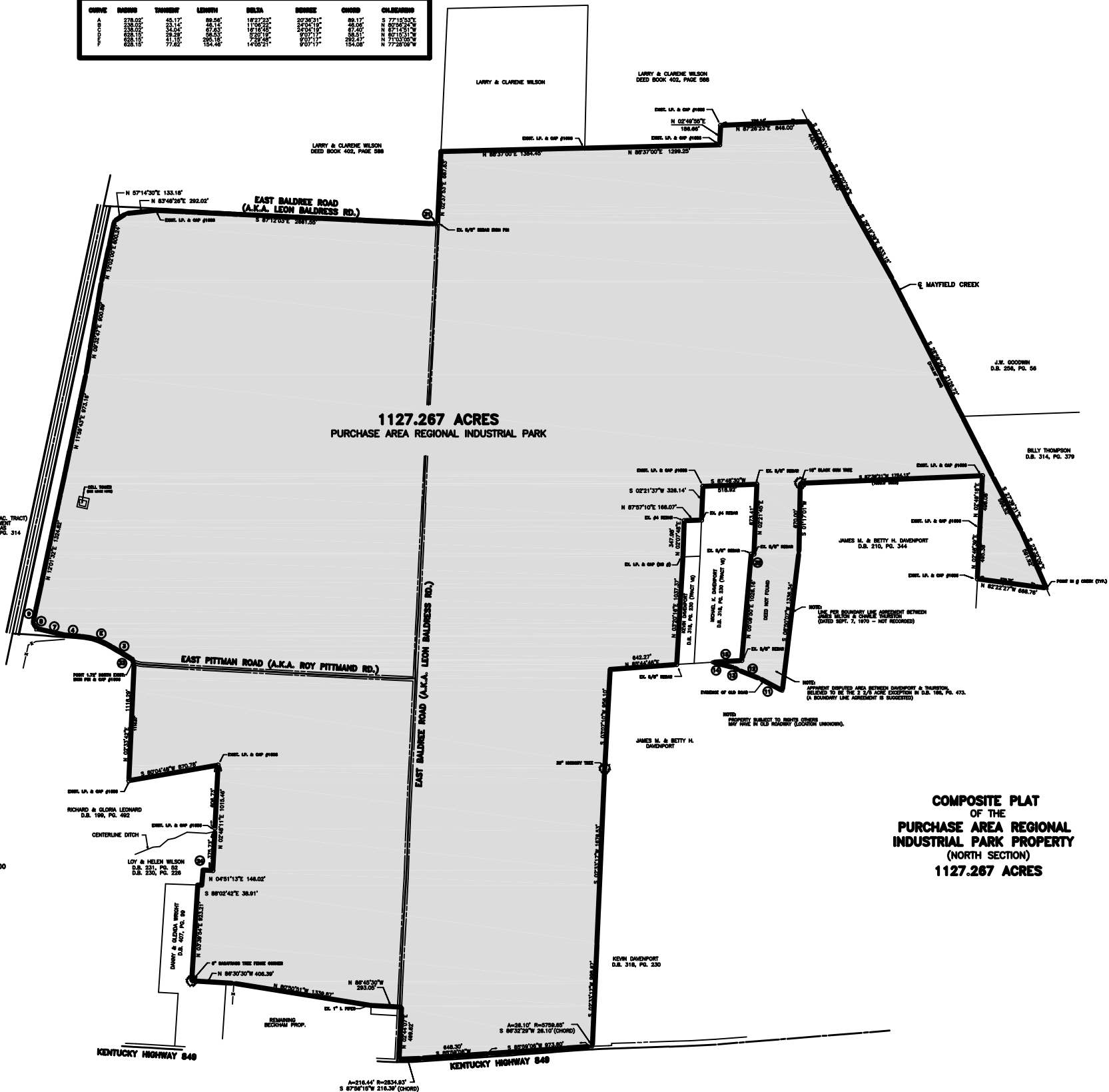
THIS PROPERTY IS SUBJECT TO ALL EASEMENTS, RIGHT-OF-WAYS, COVENANTS, AND CONDITIONS OF RECORD ON IN EXISTENCE.

TRAVERSE COMPLETED 9-30-2003

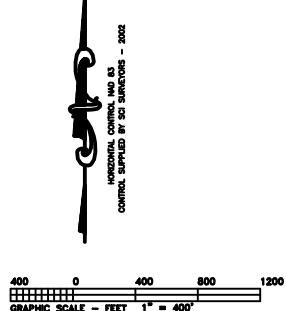


CURVE TABLE							
CURVE	BEARING	LENGTH	DELTA	CHORD	CHORD BEARING	CHORD	CHORD BEARING
1	N 87°14'30"E	133.18'	182°27'31"	202.02'	N 87°14'30"E	133.18'	N 87°14'30"E
2	N 87°14'30"E	292.02'	182°27'31"	378.02'	N 87°14'30"E	292.02'	N 87°14'30"E
3	N 87°14'30"E	207.35'	182°27'31"	278.02'	N 87°14'30"E	207.35'	N 87°14'30"E
4	N 87°14'30"E	154.06'	182°27'31"	198.02'	N 87°14'30"E	154.06'	N 87°14'30"E

CALL TABLE		
COURSE	BEARING	DISTANCE
1	N 87°14'30"E	133.18'
2	N 87°14'30"E	292.02'
3	N 87°14'30"E	207.35'
4	N 87°14'30"E	154.06'
5	N 87°14'30"E	133.18'
6	N 87°14'30"E	292.02'
7	N 87°14'30"E	207.35'
8	N 87°14'30"E	154.06'
9	N 87°14'30"E	133.18'
10	N 87°14'30"E	292.02'
11	N 87°14'30"E	207.35'
12	N 87°14'30"E	154.06'
13	N 87°14'30"E	133.18'
14	N 87°14'30"E	292.02'
15	N 87°14'30"E	207.35'
16	N 87°14'30"E	154.06'
17	N 87°14'30"E	133.18'
18	N 87°14'30"E	292.02'
19	N 87°14'30"E	207.35'
20	N 87°14'30"E	154.06'
21	N 87°14'30"E	133.18'
22	N 87°14'30"E	292.02'
23	N 87°14'30"E	207.35'
24	N 87°14'30"E	154.06'
25	N 87°14'30"E	133.18'
26	N 87°14'30"E	292.02'
27	N 87°14'30"E	207.35'
28	N 87°14'30"E	154.06'
29	N 87°14'30"E	133.18'
30	N 87°14'30"E	292.02'
31	N 87°14'30"E	207.35'
32	N 87°14'30"E	154.06'
33	N 87°14'30"E	133.18'
34	N 87°14'30"E	292.02'
35	N 87°14'30"E	207.35'
36	N 87°14'30"E	154.06'
37	N 87°14'30"E	133.18'
38	N 87°14'30"E	292.02'
39	N 87°14'30"E	207.35'
40	N 87°14'30"E	154.06'
41	N 87°14'30"E	133.18'
42	N 87°14'30"E	292.02'
43	N 87°14'30"E	207.35'
44	N 87°14'30"E	154.06'
45	N 87°14'30"E	133.18'
46	N 87°14'30"E	292.02'
47	N 87°14'30"E	207.35'
48	N 87°14'30"E	154.06'
49	N 87°14'30"E	133.18'
50	N 87°14'30"E	292.02'
51	N 87°14'30"E	207.35'
52	N 87°14'30"E	154.06'
53	N 87°14'30"E	133.18'
54	N 87°14'30"E	292.02'
55	N 87°14'30"E	207.35'
56	N 87°14'30"E	154.06'
57	N 87°14'30"E	133.18'
58	N 87°14'30"E	292.02'
59	N 87°14'30"E	207.35'
60	N 87°14'30"E	154.06'
61	N 87°14'30"E	133.18'
62	N 87°14'30"E	292.02'
63	N 87°14'30"E	207.35'
64	N 87°14'30"E	154.06'
65	N 87°14'30"E	133.18'
66	N 87°14'30"E	292.02'
67	N 87°14'30"E	207.35'
68	N 87°14'30"E	154.06'
69	N 87°14'30"E	133.18'
70	N 87°14'30"E	292.02'
71	N 87°14'30"E	207.35'
72	N 87°14'30"E	154.06'
73	N 87°14'30"E	133.18'
74	N 87°14'30"E	292.02'
75	N 87°14'30"E	207.35'
76	N 87°14'30"E	154.06'
77	N 87°14'30"E	133.18'
78	N 87°14'30"E	292.02'
79	N 87°14'30"E	207.35'
80	N 87°14'30"E	154.06'
81	N 87°14'30"E	133.18'
82	N 87°14'30"E	292.02'
83	N 87°14'30"E	207.35'
84	N 87°14'30"E	154.06'
85	N 87°14'30"E	133.18'
86	N 87°14'30"E	292.02'
87	N 87°14'30"E	207.35'
88	N 87°14'30"E	154.06'
89	N 87°14'30"E	133.18'
90	N 87°14'30"E	292.02'
91	N 87°14'30"E	207.35'
92	N 87°14'30"E	154.06'
93	N 87°14'30"E	133.18'
94	N 87°14'30"E	292.02'
95	N 87°14'30"E	207.35'
96	N 87°14'30"E	154.06'
97	N 87°14'30"E	133.18'
98	N 87°14'30"E	292.02'
99	N 87°14'30"E	207.35'
100	N 87°14'30"E	154.06'



**COMPOSITE PLAT
OF THE
PURCHASE AREA REGIONAL
INDUSTRIAL PARK PROPERTY
(NORTH SECTION)
1127.267 ACRES**



TRACT 1 (NORTH SECTION)

